



# BOAT SALES

LAKELAND LEISURE ESTATES



## Steadfast - Traditional

**Price: £45,000**

### Key Features

<b>Berths:</b>	2
<b>Length &amp; Type:</b>	48ft Narrowboat
<b>Year:</b>	1989

### Description

Steadfast is a beautifully crafted 48ft Traditional narrowboat, built in 1989 by the renowned Mike Heywood. Known for his quality craftsmanship, Heywood's work shines through in Steadfast's solid construction, timeless design, and warm, welcoming interiors. The boat is enhanced by a brand-new Titan cratch cover, adding practicality and protection to the bow area. With its charming red-walled living space, rich wooden floors, and thoughtful layout, Steadfast offers a cosy yet functional retreat, whether you're cruising along the canals or enjoying residential life on the water.

The galley is both functional and thoughtfully designed, featuring elegant solid wood countertops that add a touch of warmth and durability. Storage is abundant with under-counter cupboards and drawers, ensuring everything has its place. For cooking enthusiasts, the galley is equipped with a 4-burner hob and a separate oven/grill, making meal preparation simple and enjoyable. The stainless steel sink, fitted with a modern mixer tap, offers practicality, while the inclusion of a washing machine adds convenience for life aboard. The space balances modern amenities with the boat's traditional charm, creating an inviting and efficient cooking area.

The lounge is the heart of Steadfast, designed to provide comfort and relaxation. The red-walled interior, paired with the warmth of wooden flooring, creates a welcoming and homely atmosphere. A multifuel stove serves as the centrepiece, ensuring cosy evenings and a traditional narrowboat feel. For added warmth, a radiator is also fitted to keep the space comfortable during colder months. The lounge features a freestanding unit, offering flexible storage or display space, and the steps leading to the bow create a natural flow between the living area and outdoor spaces. This is a perfect spot to unwind, read a book, or enjoy life on the water with friends and family.

The master bedroom has been designed with both comfort and practicality in mind. A full-sized double bed provides a restful night's sleep, while a built-in wardrobe and overhead storage compartments ensure there's ample space for clothing and personal belongings. The bedroom's calm and simple layout makes it a tranquil retreat, perfect for winding down after a day's cruising.

The bathroom has been carefully designed to combine practicality with comfort. It features a Thetford C200 cassette toilet with four spare cassettes, ensuring peace of mind for longer trips. The spacious shower, complete with a modern mixer tap and a reliable Whale Gulper pump, offers a refreshing experience onboard. A sleek vanity unit provides storage under the sink, and the clean tiled backsplash adds a contemporary touch to the space. The bathroom is both functional and stylish, meeting all the needs of daily life on the water.

Steadfast is the perfect combination of character, charm, and modern convenience. Whether you're seeking a comfortable home on the water or a reliable cruising companion, this 48ft Traditional narrowboat offers everything you need to enjoy life afloat.



### Disclaimer

Whilst every care has been taken in the preparation of these specifications, no guarantee is given or implied as to their accuracy. These particulars are intended only as a guide and they do not constitute a term of any contract. Lakeland Leisure Estates Ltd advises prospective purchasers to obtain an independent survey from a qualified Marine Surveyor to satisfy themselves as to the condition of the craft.

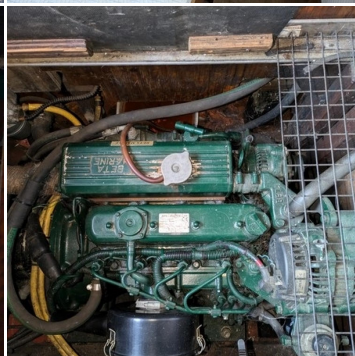
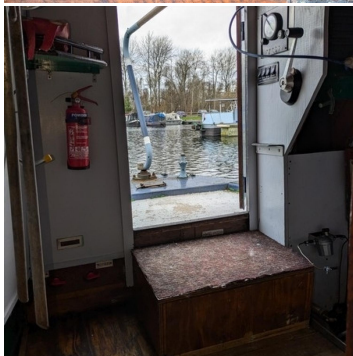
Contact Us

Call: 07801 962636

Email: [roydon@lakelandleisureboatsales.co.uk](mailto:roydon@lakelandleisureboatsales.co.uk)

[www.lakelandleisureboatsales.co.uk](http://www.lakelandleisureboatsales.co.uk)





## Additional Specs

- **Length/ Boat Style:** 48' Trad
- **Year:** 1989
- **Number of bathroom:** 1
- **Berths** 2
- **Hull By/ Fit out by:** Mike Heywood
- **Layout stern to bow:** Bedroom, bathroom, galley, saloon
- **Engine and gearbox:** Beta Marine 38 with PRM150D2 gearbox. Recently serviced
- **Boat Safety Certificate:** 2024 – will renew before sale
- **Last Blacking + type:** 2022
- **Inspection hatch and location:** Bilge inspection hatch at bottom of bedroom cupboard
- **P/out or Cassette:** Cassette
- **Insulation:** Polystyrene
- **Last Survey:** 2021
- **External Covers** Cratch
- **Bow thruster** none
- **Side Hatches and location:** Starboard Galley
- **Batteries:** 1 x starter + 1 x leisure (space for up to 3 leisure's)
- **Electric Supply:** Mains hookup + Victron 12/3000/120 inverter. 2 x 495W Solar panels
- **Galvanic Isolator:** yes
- **Water capacity** Approx 450L
- **Hot Water Supply:** Calorifier
- **Cabin Heating:** Multifuel stove and radiators
- **Central heating type:** Alde gas
- **Gas Cylinders No+ type:** 2 x 13kg propane gas bottles

### Disclaimer

Whilst every care has been taken in the preparation of these specifications, no guarantee is given or implied as to their accuracy. These particulars are intended only as a guide and they do not constitute a term of any contract. Lakeland Leisure Estates Ltd advises prospective purchasers to obtain an independent survey from a qualified Marine Surveyor to satisfy themselves as to the condition of the craft.

Contact Us

Call: 07801 962636

Email: [roydon@lakelandleisureboatsales.co.uk](mailto:roydon@lakelandleisureboatsales.co.uk)

[www.lakelandleisureboatsales.co.uk](http://www.lakelandleisureboatsales.co.uk)

