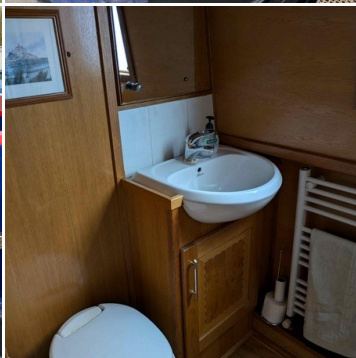




BOAT SALES

LAKELAND LEISURE ESTATES



The Hunky Dory - Semi Traditional Narrowboat

Price: £75,000

Key Features

Berths:	2
Length & Type:	57ft Semi Trad
Year:	2004

Description

Discover The Hunky Dory, a beautifully maintained 57ft semi-traditional narrowboat built in 2004. With a warm and inviting interior featuring wood throughout, this boat is neat, tidy, and ready for your personal touches. Perfect for liveaboard or leisure cruising, The Hunky Dory offers comfort, practicality, and quality craftsmanship.

Stepping aboard, you'll be greeted by a spacious semi-traditional stern that provides ample storage and external speakers to enhance your cruising experience. A durable tonneau cover protects the deck, while a DSC VHF radio antenna ensures reliable communication. The cratch cover by Kinver Canopies, fitted in 2024, adds an extra layer of protection and style. Additionally, the Vetus Bowthruuster enhances manoeuvrability, making docking and navigation a breeze. With the integral water tank repainted in 2022, this boat is well-maintained and ready for the waterways.

Inside, the galley is thoughtfully designed for functionality and convenience. A Thetford 4-ring gas hob and a brand-new Thetford gas oven with a separate grill (installed in 2024) make cooking a pleasure. The stainless steel sink with a separate drainer and a filtered drinking water tap ensures easy meal prep. Storage is plentiful, and the breakfast bar with two stools provides a cosy spot for casual dining. The Shoreline fridge with a freezer compartment, along with a full-size Shoreline freezer, ensures ample space for food storage. The engineered oak flooring adds a touch of elegance, while a side hatch with an opening roof offers fresh air and scenic views.

The lounge is a welcoming retreat, featuring two freestanding leather armchairs that provide both comfort and flexibility. A 21" television with DVD and recording capability keeps you entertained, while the Hamlet multi-fuel stove, newly installed in 2024, ensures warmth on cooler days. A corner display cabinet, radio, radiator, and a built-in wine rack complete this inviting space. Carpeted flooring enhances the cosy atmosphere, making this the perfect spot to unwind after a day of cruising.

For added convenience, The Hunky Dory boasts a well-equipped utility room. A domestic-sized Bosch washing machine makes laundry effortless, while a sink provides additional functionality. A radio and safe add to the practicality of the space. The smart gauge battery monitor and solar panel information panel keep you informed about power usage. The engineered oak flooring extends into this space, adding to the boat's refined interior design.

The master bedroom offers a peaceful and comfortable sleeping area with a 4' in-line double bed. Storage is abundant, with a half-height wardrobe, large clothes storage cupboards, and full under-bed drawers and cupboards. Overhead lockers with reading lights add convenience, and a radiator with a built-in shelf ensures warmth. The engineered oak flooring continues, creating a cohesive and stylish environment.

The bathroom is designed with both functionality and comfort in mind. A white semi-recessed washbasin sits elegantly within the space, complemented by a Thetford toilet with three cassettes for convenience. The full-sized laminate-walled shower cubicle provides a refreshing experience, and a mirror with a cabinet offers practical storage. A heated towel rail/radiator ensures warmth, while a large laundry storage cupboard helps keep essentials organized. Engineered oak flooring enhances the polished aesthetic of the space.

This traditional yet well-equipped narrowboat is ideal for anyone looking to enjoy a life on the water. With recent updates, including a new stove, oven, and cratch cover, The Hunky Dory is a charming and functional home afloat.

Disclaimer

Whilst every care has been taken in the preparation of these specifications, no guarantee is given or implied as to their accuracy. These particulars are intended only as a guide and they do not constitute a term of any contract. Lakeland Leisure Estates Ltd advises prospective purchasers to obtain an independent survey from a qualified Marine Surveyor to satisfy themselves as to the condition of the craft.

Contact Us

Call: 07354902086

Email: greathaywood@lakandleisureboatsales.co.uk

www.lakandleisureboatsales.co.uk





Additional Specs

- **Length/ Boat Style:** 57ft Semi Traditional
- **Year:** 2004
- **Number of bathrooms:** 1
- **Berths:** 2
- **Water Tank Capacity:** 1000 Litres
- **Waste Tank Capacity:** N/A
- **Fuel Tank Capacity:** 400 Litres
- **Hull By/ Fit out by:** G. Reeves Shell, Sabre Fitout
- **Layout stern to bow:** Utility Room / Bedroom / Bathroom / Kitchen / Saloon
- **Engine and gearbox:** Beta 43, PRM Gearbox
- **Engine hours/Last service:** Serviced May 2024 7623 Hours
- **Boat Safety Certificate:** Yes, Expiry 12/4/2025 booked in for new BSS
- **Last Blacking & type:** August 2022 with Bitumen
- **Hull thickness:** 10/6/4
- **Inspection hatch and location:** In Starboard side utility in cupboard
- **P/out or Cassette:** Cassette
- **Insulation:** Spray foam
- **External Covers:** Cratch cover made by Kinver Canopies May 2024
- **Bowthruster:** Yes, Vetus
- **Side Hatches and location:** Portside, Midship
- **Batteries:** 1x Starter, 4 x Domestic Lead acid 105ah
- **Electric Supply:** Engine, shoreline, Travel power engine mounted generator 1800 Watt Sterling Inverter
- **Galvanic Isolator:** Yes
- **Hot Water Supply:** Engine, Calorifier, Immersion, Webasto
- **Cabin Heating:** Webasto - 5 Radiators, Hamlet Multi fuel Stove
- **Central heating type:** Webasto
- **Gas Cylinders No+ type:** 2 x 13kg Propane

Disclaimer

Whilst every care has been taken in the preparation of these specifications, no guarantee is given or implied as to their accuracy. These particulars are intended only as a guide and they do not constitute a term of any contract. Lakeland Leisure Estates Ltd advises prospective purchasers to obtain an independent survey from a qualified Marine Surveyor to satisfy themselves as to the condition of the craft.

Contact Us

Call: 07354902086

Email: greathaywood@lakelandleisureboatsales.co.uk

www.lakelandleisureboatsales.co.uk

